

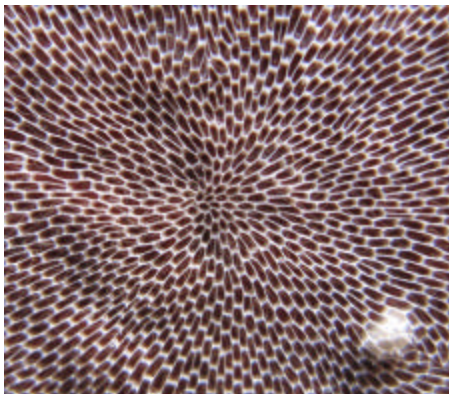
**Population and growth dynamics
of the invasive bryozoan *Membranipora membranacea* (Linnaeus 1767)
along the coast of Newfoundland and Labrador**

Scott Caines

M.Sc. candidate (Biology) Memorial University

Friday, April 3, 2009, 1:00 to 2:00 pm

Genesis Boardroom, Inco Innovation Centre, IIC 3001, Memorial University Campus



The European bryozoan *Membranipora membranacea* was introduced to the southwestern North Atlantic in the late 1980s. Since then the alien has spread northwards and was first sighted in 2002 along the coast of Newfoundland and Labrador (NL).

Annual outbreaks of *M. membranacea* in Nova Scotia and Maine have caused recurrent declines in kelp biomass, and presumably the associated flora and fauna. The invasion dynamics and impacts of *M. membranacea* on NL's subtidal ecosystems are unknown and likely to differ than those in other parts of the northwestern North Atlantic due to differing environmental conditions. This research aims to quantify spatial and temporal variation in recruitment and growth of *M. membranacea* along the coast of NL and to experimentally quantify variations in growth and development.

This project is partly funded by the Institute for Biodiversity, Ecosystem Science and Sustainability (IBES).

Please confirm attendance with Janet Oliver (joliver@mun.ca) or 737-7551